

## Data Sheet



## Seawater Reverse Osmosis (RO) Membranes SW 4040 R

### Overview

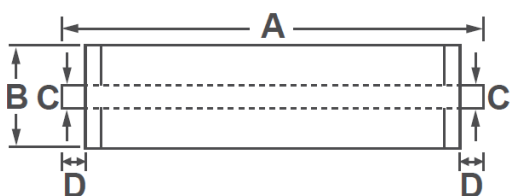
WACO Corp NanoH<sub>2</sub>O™ seawater RO membranes, incorporated with innovative Thin Film Nanocomposite (TFN) technology, deliver industry-leading salt rejection and 20% more flow than the membranes manufactured from conventional technologies. Our seawater RO membranes significantly reduce the cost of desalination while delivering superior water quality. In WACO Corp, we do our utmost to fulfill customer needs and provide additional values from excellent commercial and technical supports. With state-of-the-art technology and customer focus, WACO Corp has been awarded more than 3,000 Million Liter per Day (MLD) seawater projects since its establishment.

SW R (High Rejection) membranes offer a combination of high rejection and low energy requirements to reduce the total cost of desalination; suitable for medium to high salinity seawater applications.

### Product Specifications

Active Membrane Area, ft <sup>2</sup> (m <sup>2</sup> )	Permeate Flow Rate, GPD (m <sup>3</sup> /d)	Stabilized Salt Rejection, %	Minimum Salt Rejection, %	Feed Spacer, Mil
80 (7.4)	1,950 (7.4)	99.7	99.5	28

Test Conditions: 32,000 ppm NaCl at 25°C (77°F), 800 psi (55 bar), pH 8, Recovery 8%.  
Permeate flows for individual elements may vary +/-20%.



A, mm (in.)	B, mm (in.)	C, mm (in.)	D, mm (in.)	Weight kg (lbs.)
1,016 (40)	100 (3.9)	19 (0.75)	29 (1.1)	4.2 (9.3)

### Operating Specifications

Max. Applied pressure	1,200 psi (82.7 bar)
Max. Chlorine concentration	< 0.1 ppm
Max. Operating temperature	45°C (113°F)
pH Range, Continuous (Cleaning)	2-11 (2-13)
Max. Feedwater turbidity	1.0 NTU
Max. Feedwater SDI (15 mins)	5.0
Max. Feed flow	15 gpm (3.4 m <sup>3</sup> /h)
Min. Ratio of concentrate to permeate flow for any element	5 : 1
Max. Pressure drop (ΔP) for each element	15 psi (1.0 bar)

The information and data contained herein are deemed to be accurate and reliable and are offered in good faith, but without guarantee of performance. WACO Corp assumes no liability for results obtained or damages incurred through the application of the information contained herein. Customer is responsible for determining whether the products and information presented herein are appropriate for the customer's use and for ensuring that customer's workplace and disposal practices are in compliance with applicable laws and other governmental enactments. Specifications subject to change without notice. NanoH<sub>2</sub>O is the Trademark of The WACO Water Solutions or an affiliated company of WACO Corp.