

## PRODUCT WARRANTY CARD

We **WACO Corp.** supply the reliable products through the perfect quality control and service inspection and do our best to fulfill customer satisfaction.

We guarantee that the repair or exchange of faulty components will be conducted without charge when the defect occurred during the manufacturing process or malfunction occurred within the guarantee period. Please refer to your local distributor in such case.

### Guarantee Period

1. Warranty period is for 12 months after purchase of the product.
2. However in cases mentioned below. charges would be applicable.

- 1) After expiry of free warranty period.
- 2) Damage or malfunction caused by careless usage.
- 3) Malfunction occurred due to natural calamity.
- 4) Loss of the warranty card.

Repair Date	Repair Contents	Repair Place	Name of Repair Place



**WACO Corp.**

**MADE IN KOREA** 

B-101, Hage Technotown, 10, Nowon-ro 15-gil, Nowon-gu, Seoul, Korea  
 TEL +82-2-948-0657 Fax +82-2-948-2342  
[www.waco.co.kr](http://www.waco.co.kr)



**USER'S MANUAL**

## NON - ELECTRICAL BIDET

**BOBSLEI** ▪ Easy to install Bidet.  
 ▪ Keep your Healthy.



*Bidet for*

**Clean Hand**

Healthy & Hygiene Life



**WACO Corp.**

**MADE IN KOREA** 



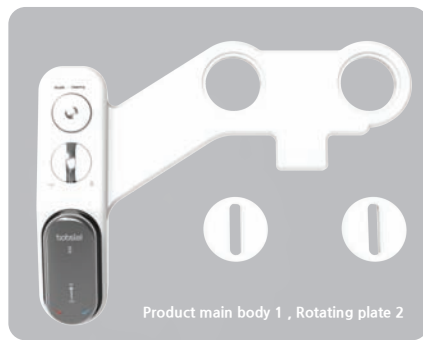
**KOTRA Global Brand Company**

## ACCESSORIES

### bobslei II



### bobslei I



➔ BOBSLEI - II : Product main body-1, rotating plate-2, tubing-2MX2, pipe adapter-2, manual-1

➔ BOBSLEI - I : Product main body-1, rotating plate-2, tubing-2M, pipe adapter-1, manual-1

## INSTALLATION (DIY)

### 1. Install bidet as instructed by picture after separating ready-installed toilet seat cover.

At this time, assemble fitting into locking position, followed by rotating and fitting rotating plate into toilet seat locking hole. Nozzle part is to be positioned at the center of toilet seat when locking, and also inside part of nozzle part should be touched tightly into inside part of toilet seat.

### 2. After locking pipe valve of cold and hot water of toilet seat or toilet, uncloze nut with rench (spanner).

And, connect provided pipe adapter as shown in picture.

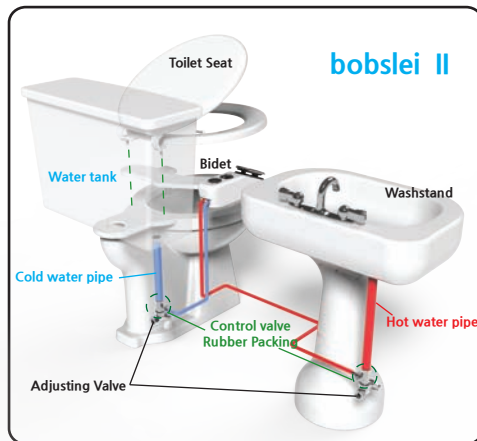
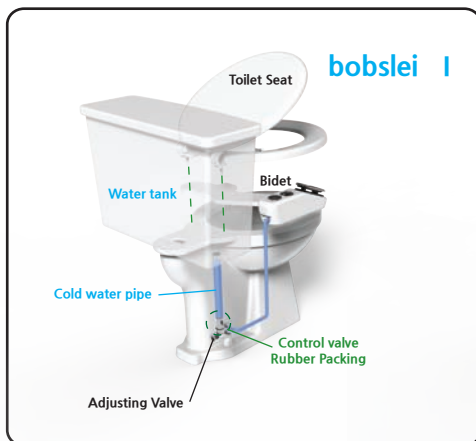
### 3. After connecting tubing with tubing connection part of pipe adapter, push tubing into one touch fitting part of reverse side of bidet.

Model of BOBSLEI-II has 2 cold and hot connection fittings in back side of product, and should be careful to avoid wrong connection with BLUE color (cold) and RED color (hot).

### 4. Check any leakage by opening middle valve of pipe adapter after all connection is completed.

### 5. Adjustment of water pressure.

Adjust for proper water pressure of nozzle ejection by opening middle valve slowly at the state of raising water pressure handle to upper direction perfectly with middle valve of pipe adapter closed, considering that inconvenience may arise when using in case of installation place with higher water pressure.

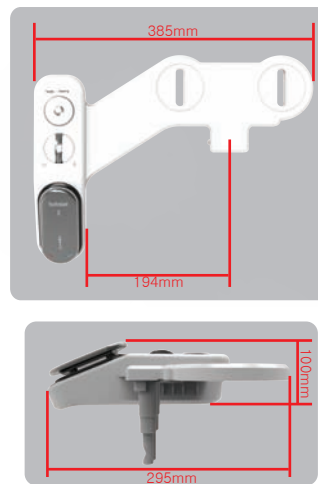


## THE WAY OF USING FOR OPERATION PARTS

### Component & Usage



### Product specification



1. Rinse nozzle part by pushing nozzle cleaning button.
2. Place washing selection lever at desired position.
3. Lower handle after washing when desired pressure reaches with raising handle slowly.

Type	BOBSLEI - I economic model	BOBSLEI - II high class model
Water temperature control	X	⊙
Washing function	⊙	⊙
Nozzle for female exclusively	⊙	⊙
Nozzle cleaning	⊙	⊙

[Temperature control is made by mixing cold and hot water in case of BOBSLEI-II model, and move round handle to hot water (RED COLOR) direction slowly. Stop if desired temperature is given. Should move round handle slowly to avoid hot water supply suddenly in case of moving round handle rapidly to hot water direction]

## FEATURES

### 1. Design

Improves bathroom integrity thanks to nicely streamlined design.  
Gives convenient grip feeling due to ergonomic design.

### 2. Non-electrical type

No power cost is needed due to operation by hydraulic pressure not by electric power.  
Rinse by water can be made with electrical parts not employed entirely.  
No danger by electrical reception and fire is given.

### 3. Convenience

DIY installation is possible simply.  
Can be applied to any size toilet seat (Rotation plate function).  
Hygienic merit due to direct water supply mode.

### 4. Functionality

Water pressure and temperature can be controlled by one lever (ceramic cartridge applied).  
Nozzle cleaning function clean nozzle before use, and prevent and keep nozzle from contamination.  
2 nozzle method with different angle enables general and female washing.  
Employs sliding nozzle method ejecting when using only (Hygiene).